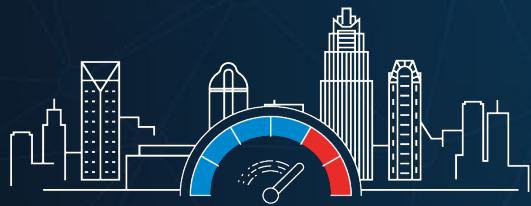




# NS2022

ACCELERATING INNOVATION

# Niagara Meets BIM & AR/VR to Advantage the FM Function



**NS2022**  
ACCELERATING INNOVATION

# Niagara Meets BIM & AR/VR to Advantage the FM Function

## MODERATOR



**THERESE SULLIVAN**  
Marketing Director |  
Tridium



**OLIVIER POUMEYROL**  
Co-founder | VayanData



**MIKE MITCHELL**  
Chief Technical Officer |  
Cochrane Supply &  
Engineering

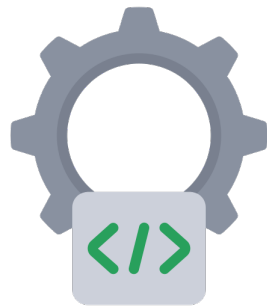
# AGENDA

- Introductions
- VayanData's Olivier Poumeyrol on Data Modeling
- Cochrane Supply's Mike Mitchell on new AR/VR application
- Q&A

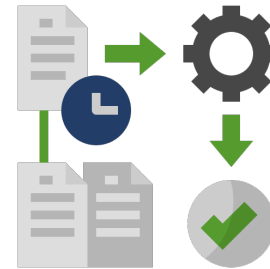


# VayanData

Software development company editing the **ACTIVE** Toolset to enrich Niagara  
MSI specialized in BAS, BIM, IoT and Network integration

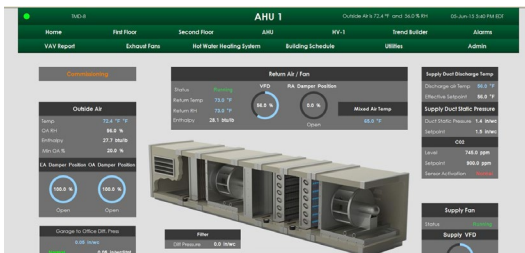


**Software  
Development**

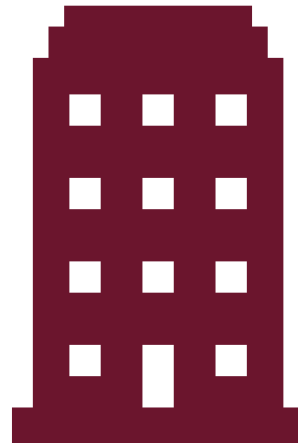


**Master System  
Integrator**

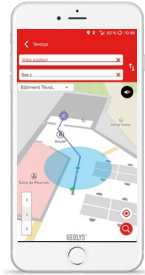
# Yesterday's building



Technical supervision



# Today's building



Workplace app



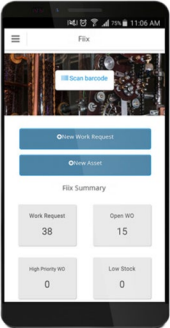
Dashboard & Analytics



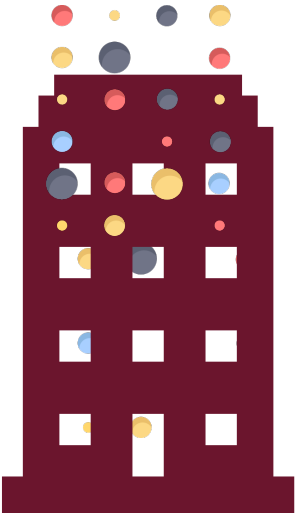
BIM Maintenance app



Technical supervision



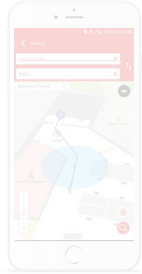
CMMS



# Today's building



Dashboard & Analytics



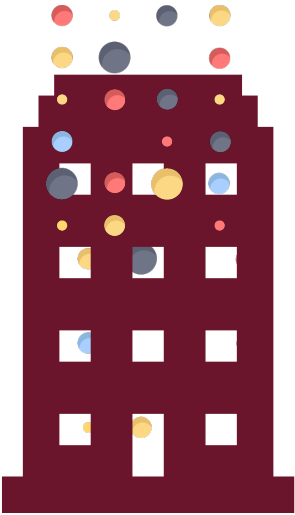
Workplace app



BIM Maintenance app



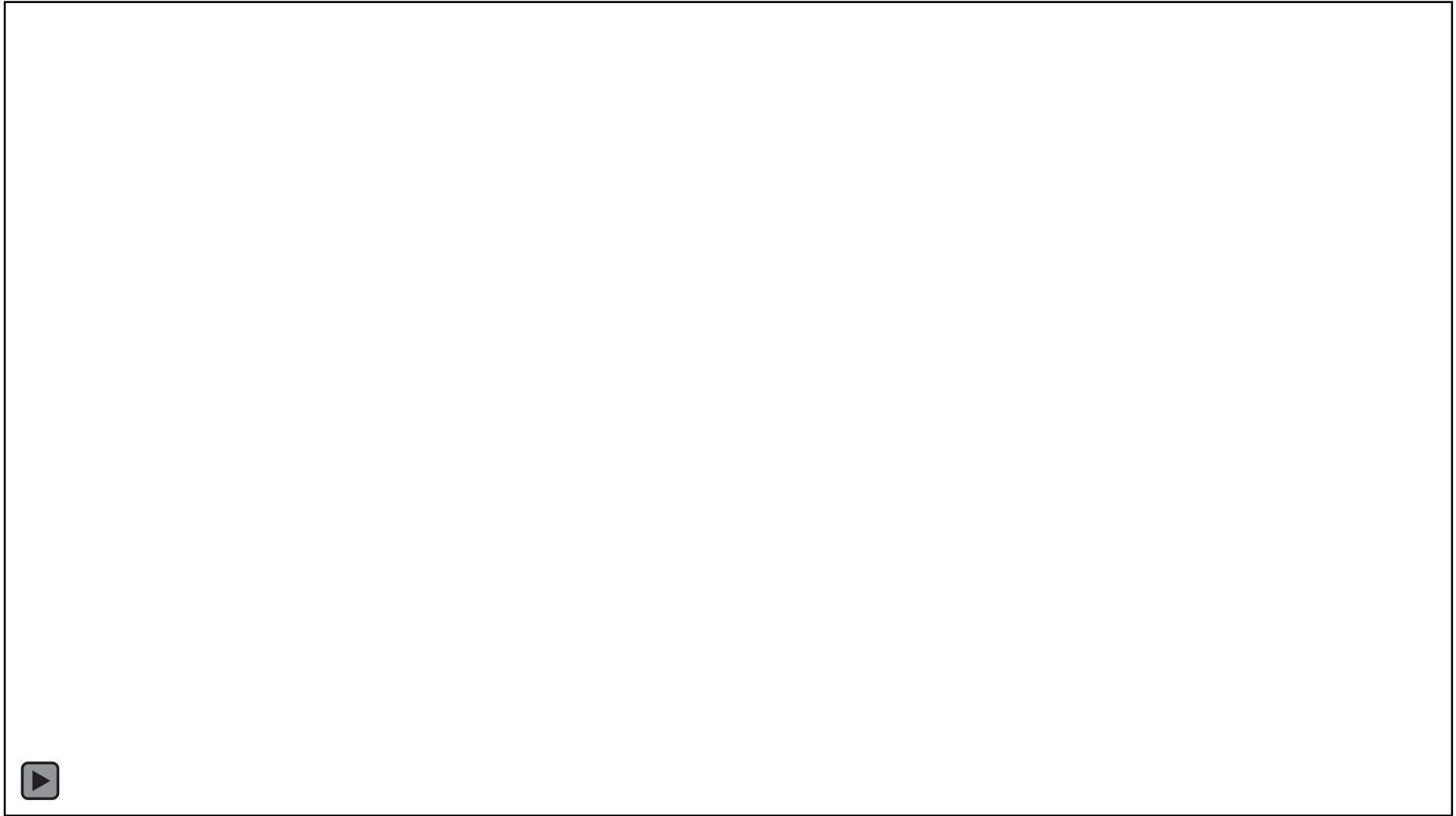
Technical supervision



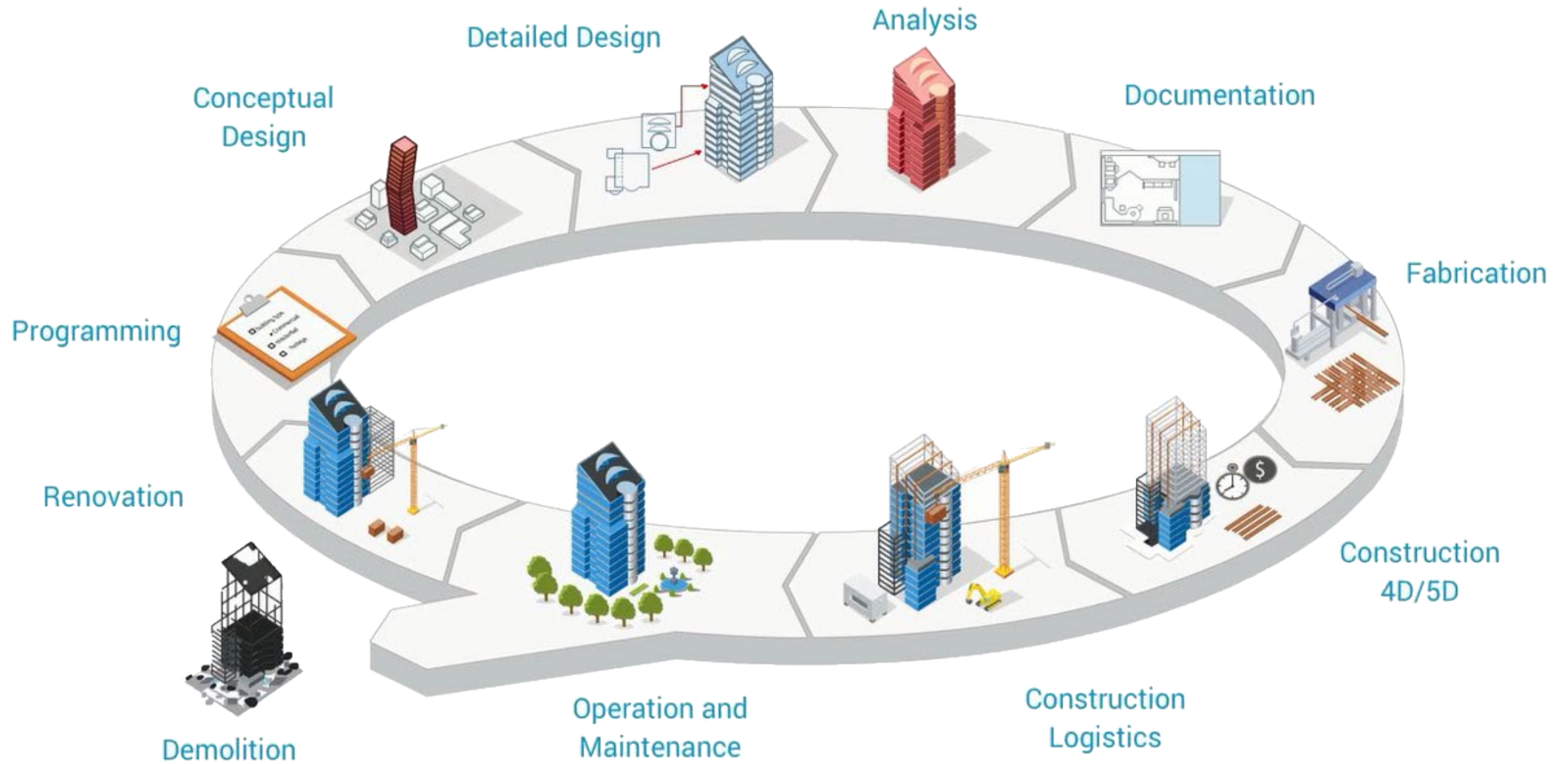
CMMS



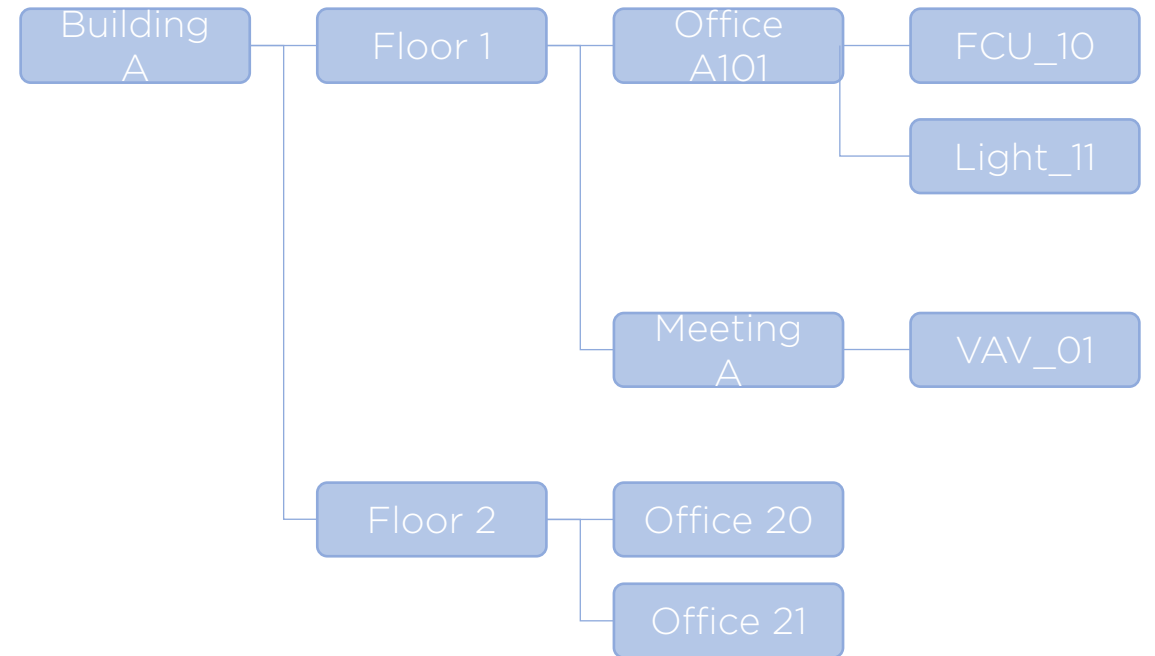
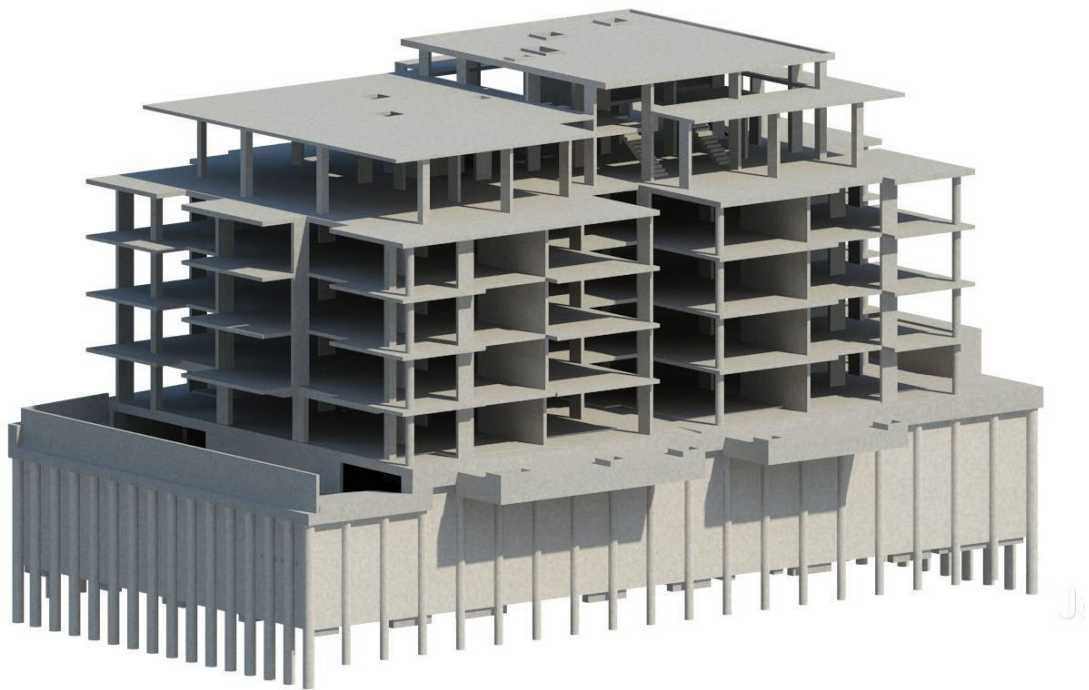
# Demo of BIM Applications



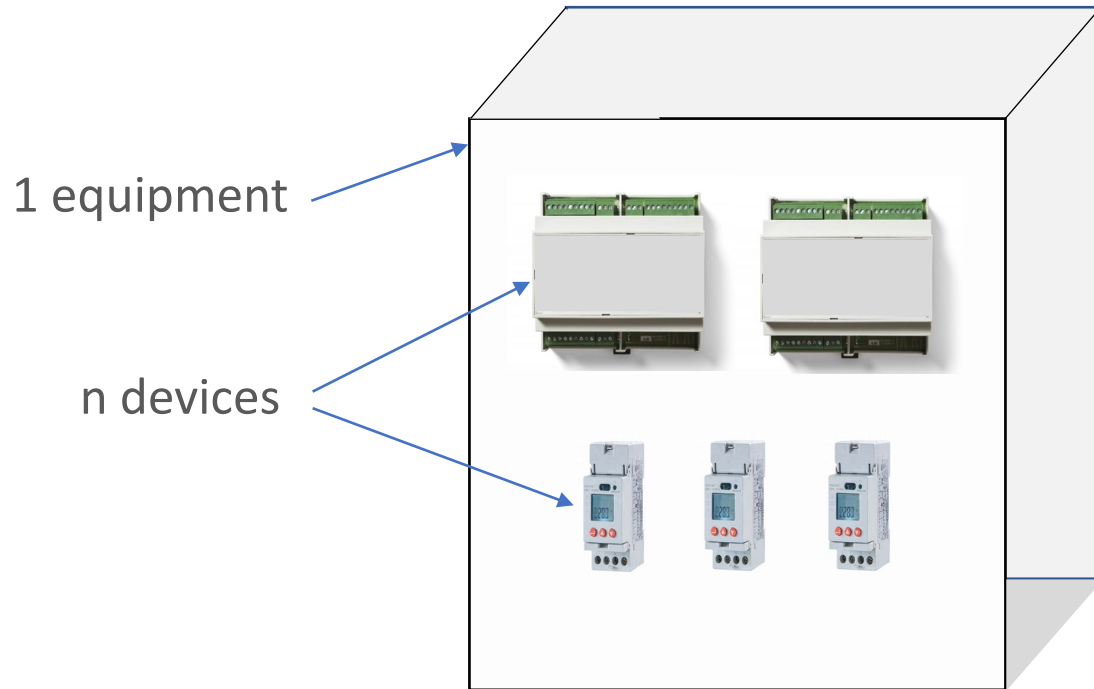
# BIM



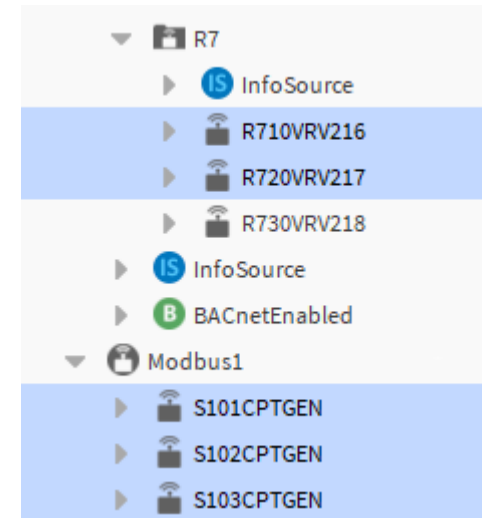
# BIM: 3D model vs Data model



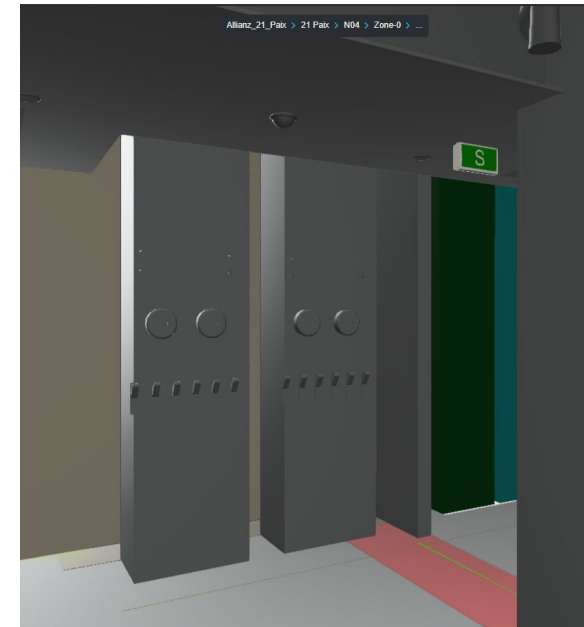
# BIM and BAS modeling variations



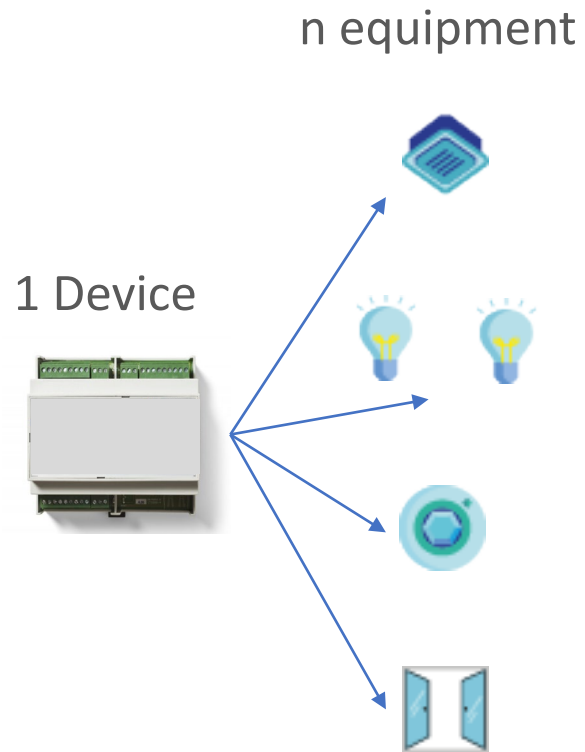
n devices



1 equipment



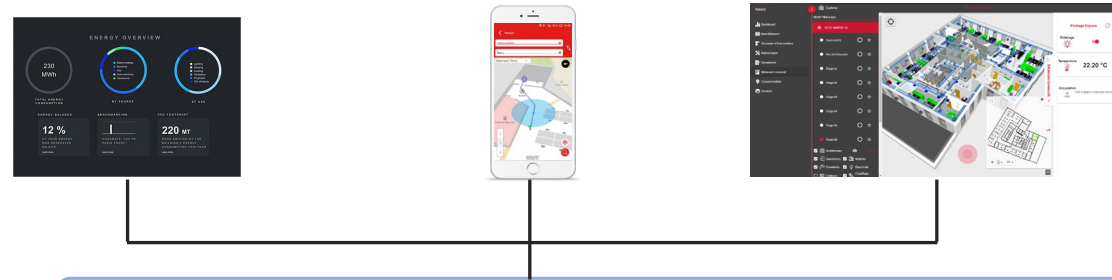
# BIM and BAS modeling variations



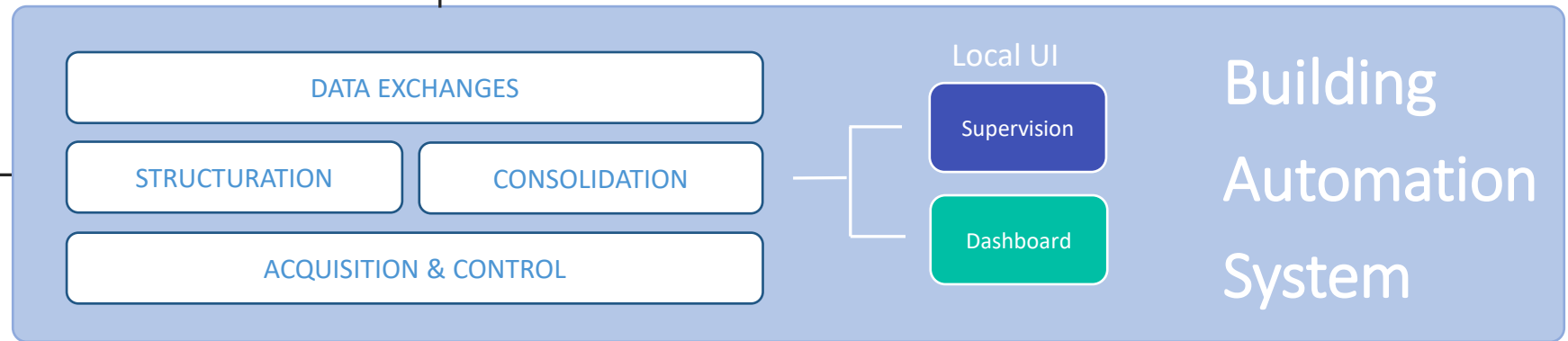
- ▼ R430VRV129
  - ▶ Alarm Source Info
  - ▼ Points
    - ▼ Cassette1
      - ▼ E4\_LUM\_13
        - ▶ Commande gradation
        - ▶ InfoSource
        - ▶ Commande gradation de groupe
      - ▼ E4\_LUM\_14
        - ▶ Commande gradation
        - ▶ InfoSource
        - ▶ Commande gradation de groupe
      - ▼ E4\_MCP\_04
        - ▶ Température ambiante
        - ▶ Luminosité Ambiante
        - ▶ Présence
        - ▶ InfoSource
      - ▼ E4\_VC\_04
        - ▶ Consigne effective
        - ▶ Consigne inoccupation été
        - ▶ Consigne réduit été



# Global stack of a modern BAS architecture



## Static Data Model



## Dynamic data

### IoT



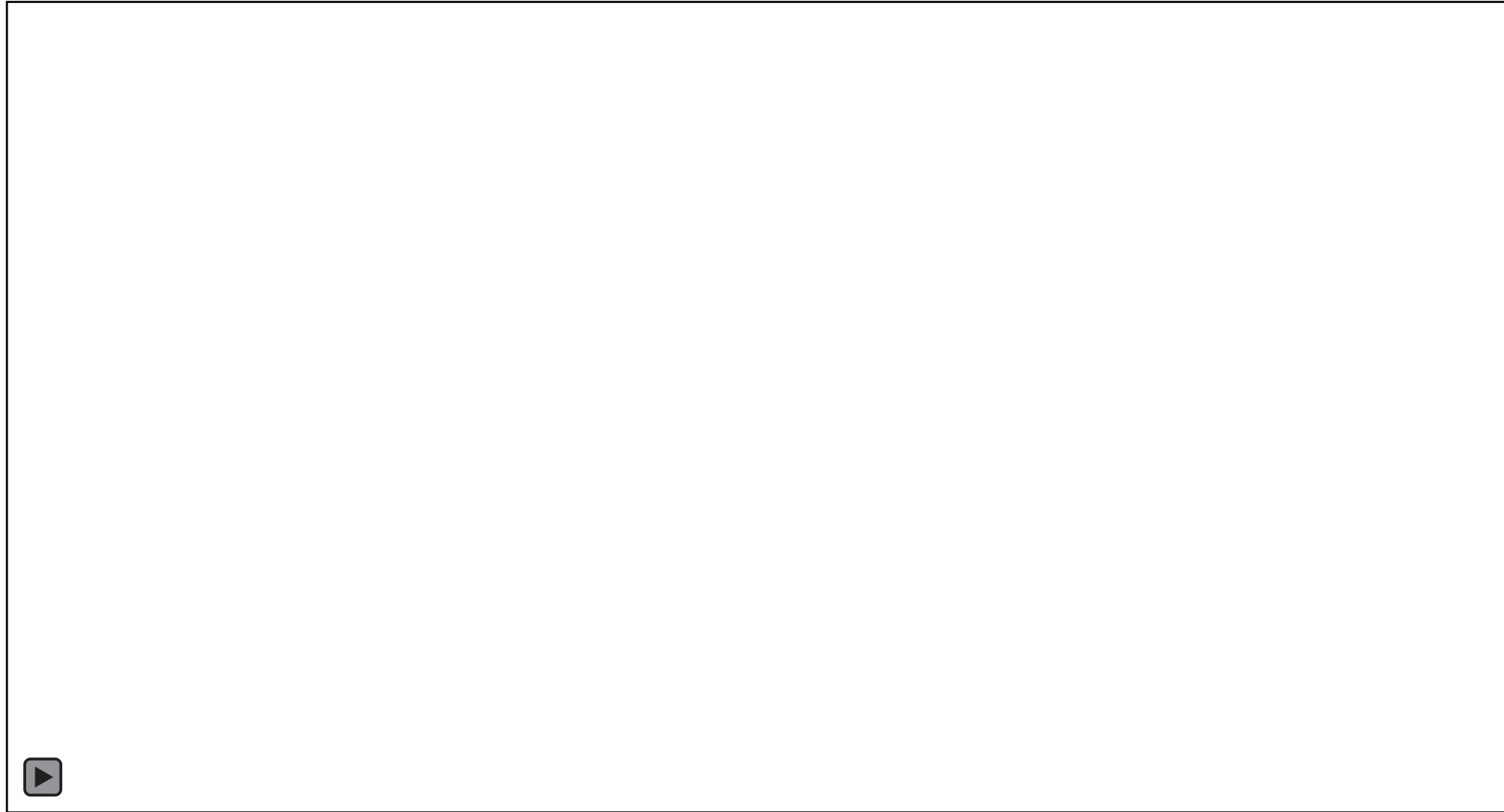
### BAS Systems



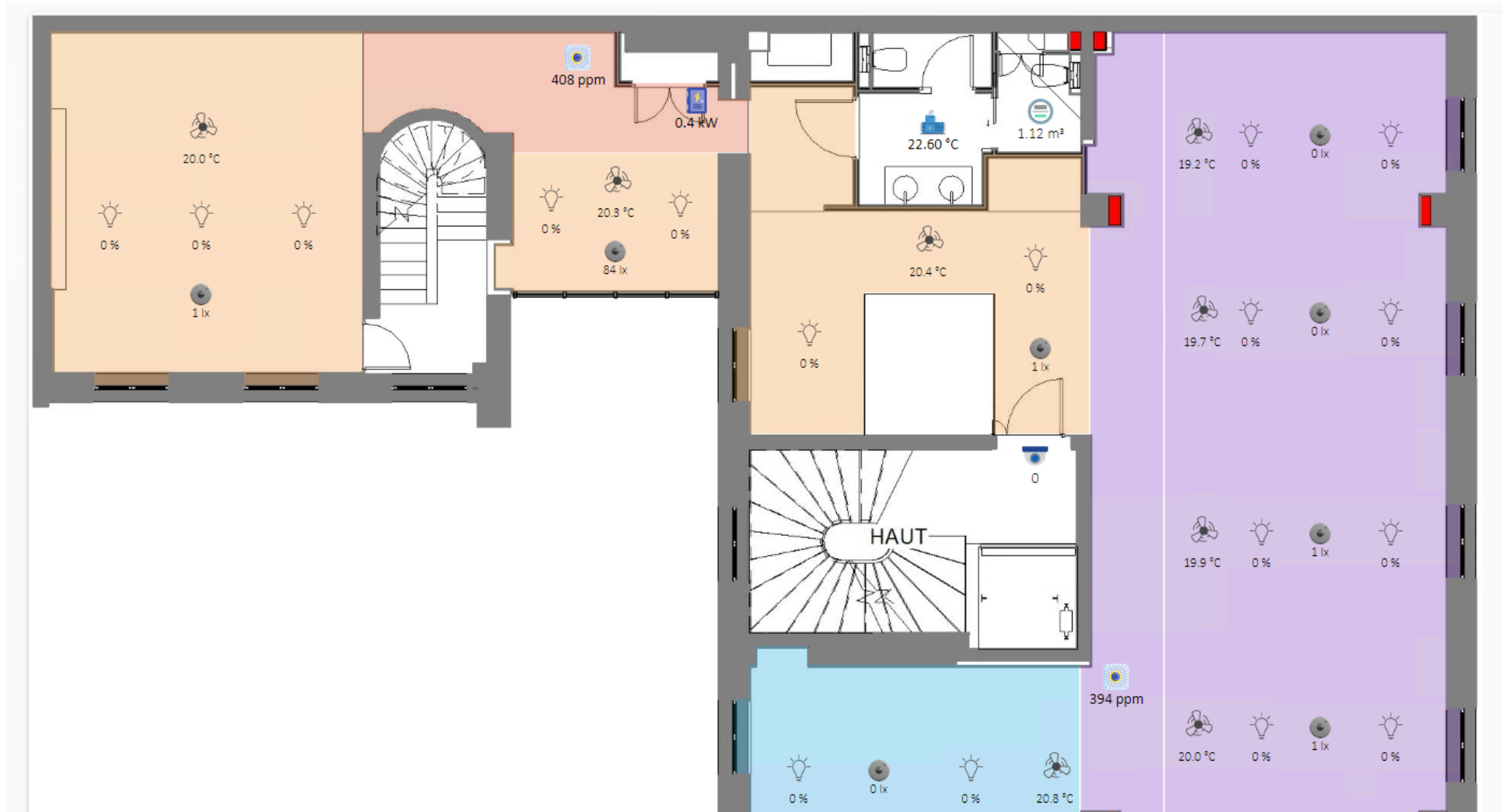
### Silos



# Pairing static data and dynamic data into a BAS

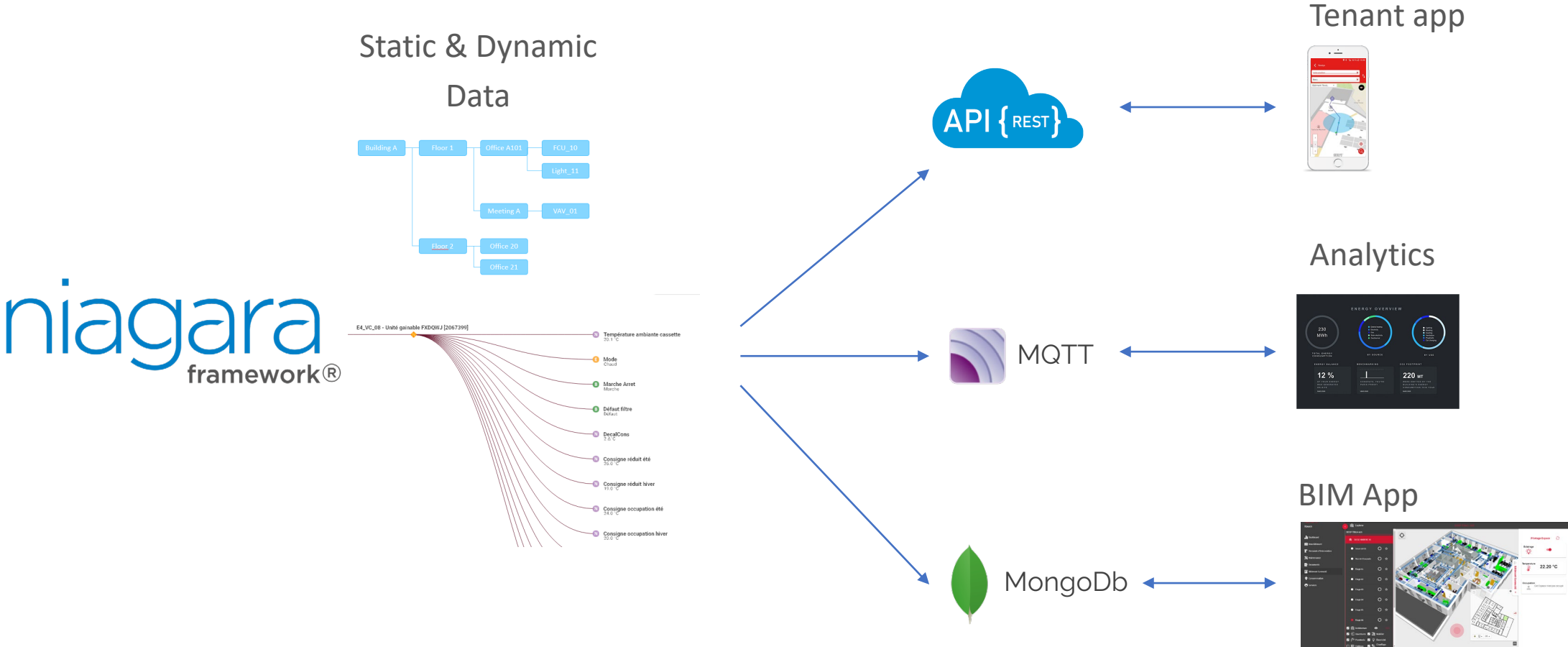


# First advantage: Automatic graphics positioning





# Sharing structured data based on a common Data Model

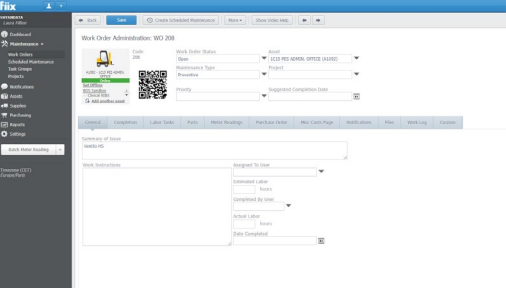


# Example with a CMMS



# Advanced integration between services

## Work Order



## Analytics

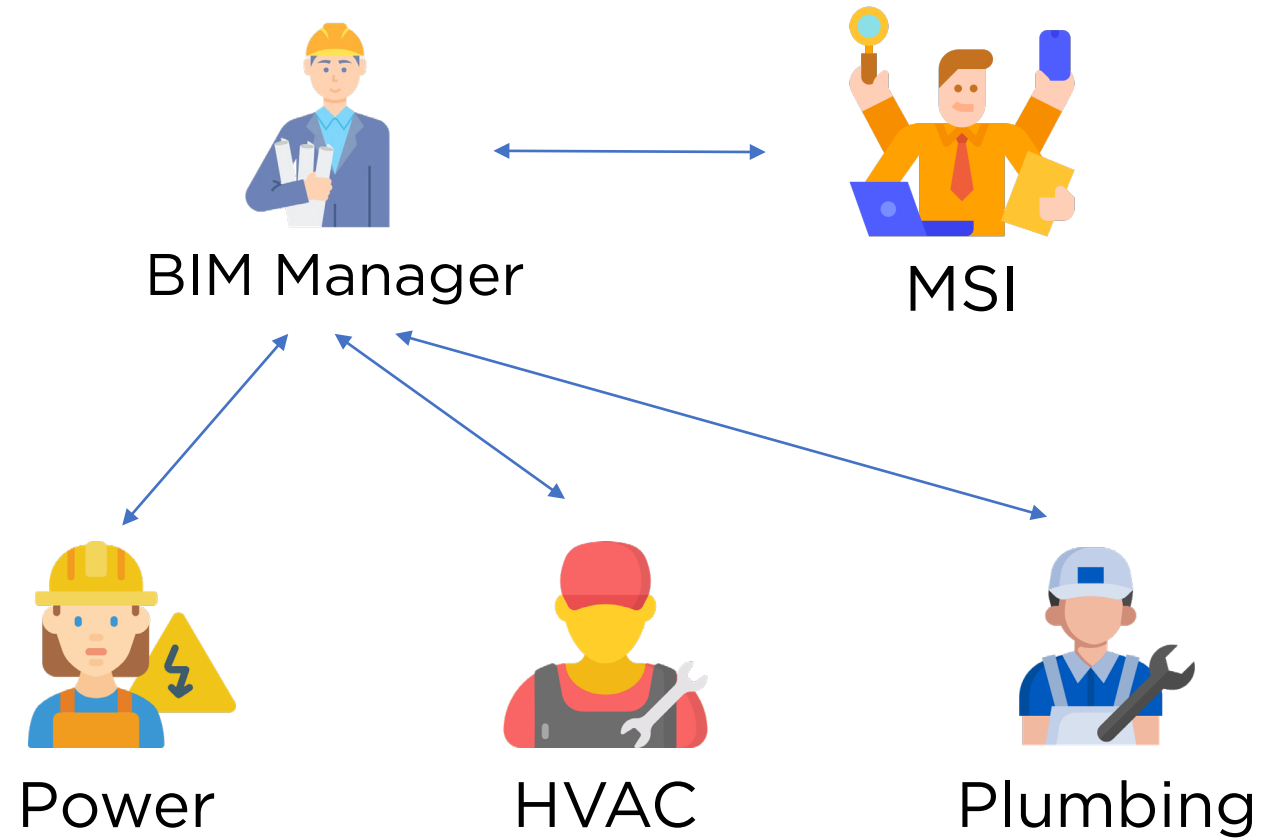


## BIM App

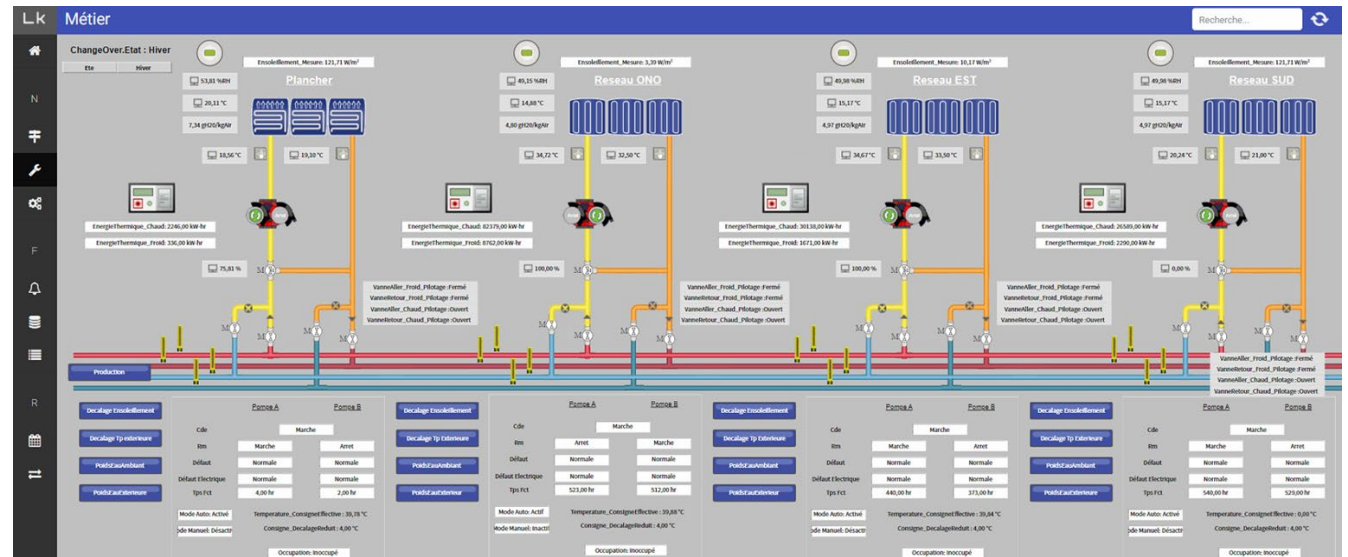
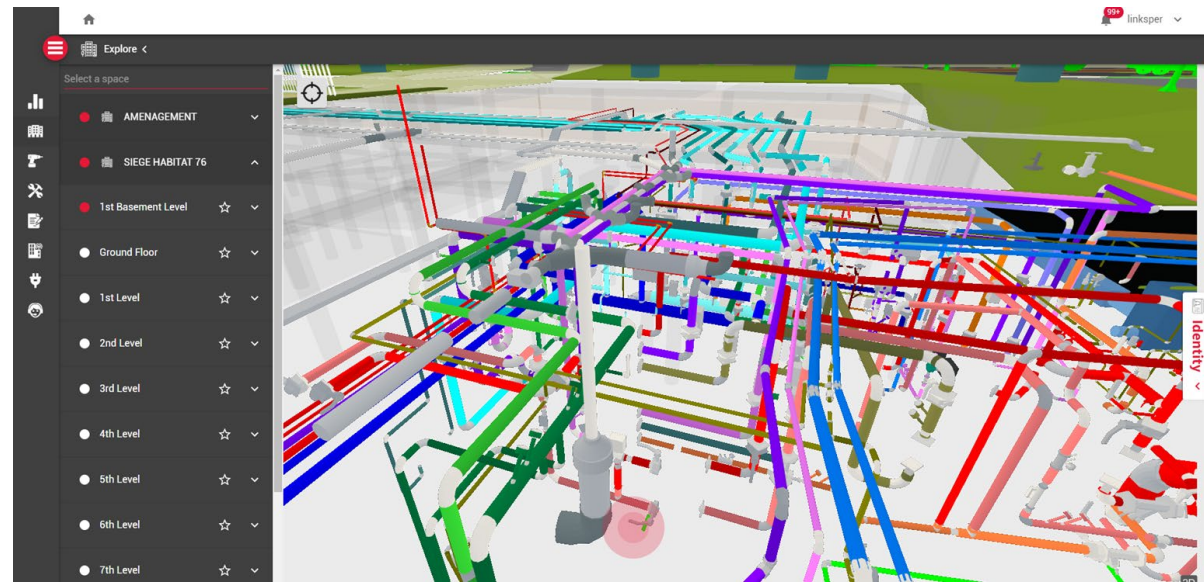


# A new [additional] role for a MSI

- Naming convention
- Data unity & consistency
- Equipment hierarchies
- Level of details



# Will a BIM application replace a BAS head-end?





# NS2022

ACCELERATING INNOVATION

CHARLOTTE, NC | APRIL 4-6

Mike Mitchell

**COCHRANE**  
**SUPPLY**



**TRIDIUM**

# The 3 Amigos!

Microsoft Dynamics 365 Remote Assist

Microsoft Dynamics 365 Guides

H2N4 by Cochrane Tech Services

*...they work great individually and as a team!*



# Microsoft Dynamics 365 Remote Assist

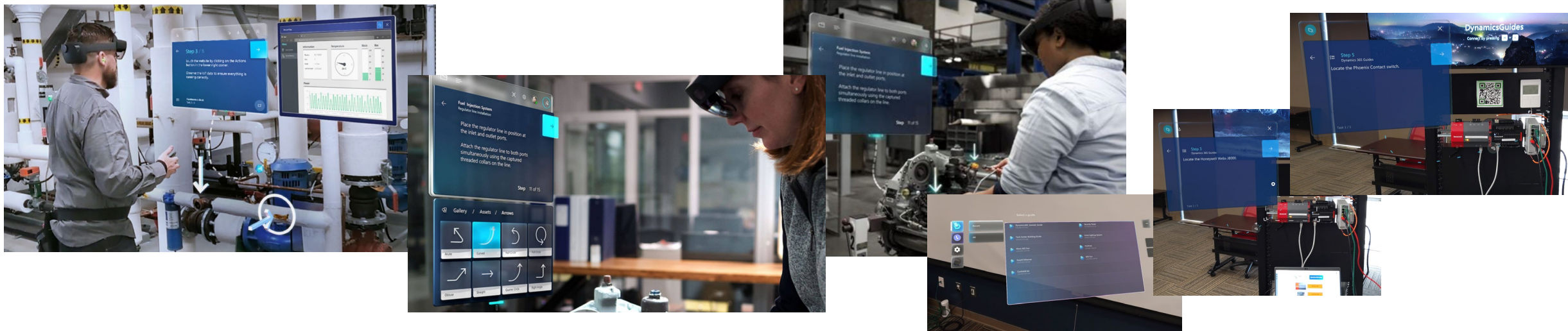
A HoloLens App that allows remote expertise to be available to onsite technicians for diagnosis of building issues. Remote technicians can “see through the eyes” of the onsite crew, superimposing holographic whiteboard information and documents to assist in maintenance and troubleshooting.





# Microsoft Dynamics 365 Guides

Allows the integrator to create holographic building information like user training, maintenance steps, equipment path finding, and easy access documentation such as: as-builts, installation guides, and manufacturer documentation. Author and Operator roles can be the domain of building owners, service personnel, integrators, or Cochrane Technical support staff.

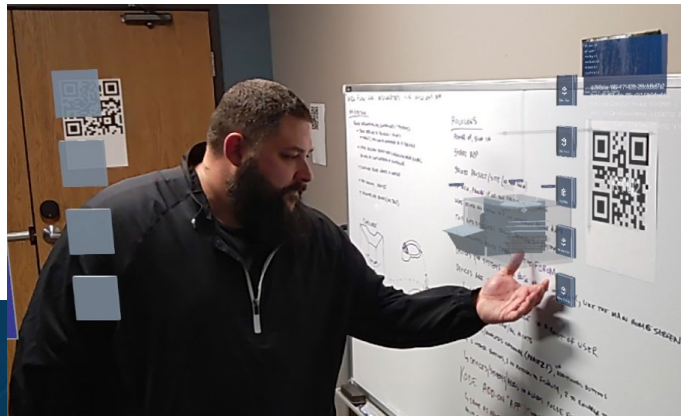


# H2N4 - Connecting Hololens 2 with Niagara 4

*It's an N4 Service, and a Hololens 2 App!*

The Niagara Service allows communication between an N4 station and a Microsoft Hololens 2 device app.

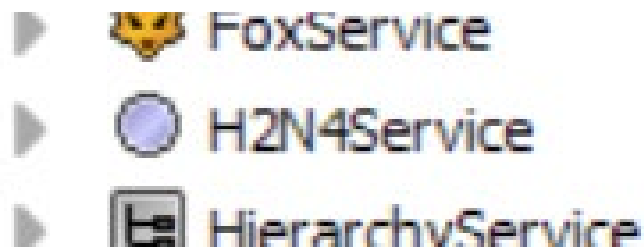
This results in the ability to view live data using the Hololens 2 Application with 3D representations of devices, floor plans, duct work, piping layouts, building or campus renderings, as-builts, installation guides, and any other important documentation for the site.



# H2N4 - Niagara 4 Service

The H2N4 Service: - keeping things as simple as possible!

- Add the Service, do a couple of Actions...
- Uses h2n4 tag dictionary marker tags as a root system, but other dictionaries welcome!
- Creates Web Servlets that allow the Hololens 2 device to request and send data.
- Data from h2n4 tagged devices/systems is JSON formatted using templates.
- QR Codes available as web view of Service for easy printing.



# H2N4 - Hololens 2 App

Create Profiles - similar to the station list in workbench

Create Stations in the Profile - keeps what you want to connect to handy

Pick a station, launch the App View

App View Data Presented As:

- Data Panels - Basic and Detailed
- Small Scale View: Smaller 3d Models w overlaid data

Coming Soon:

- Xray View: Large 3d models that fit the actual space with overlaid data
- Documentation
- Histories



# H2N4

## Live Demo!



# NS2022

ACCELERATING INNOVATION

CHARLOTTE, NC | APRIL 4-6

# THANK YOU!